

Galva-Holstein Community School District

Schaller-Crestland Community School District

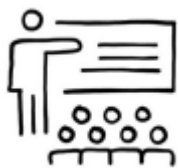
RETURN TO LEARN PLAN

SUPPORTS, PROCEDURES AND OPTIONS FOR FAMILIES



OUTLINE OF PLANS FOR THREE LEARNING SCENARIOS

IN PERSON
LEARNING



ONLINE
LEARNING



HYBRID
LEARNING



This plan is a guiding document that will continue to change as recommendations from health officials and the governor's office allocates changes. We will communicate information as plans are updated and changed.

SUPPORTS WITHIN OUR COMMUNITIES

Governor Reynolds recommended on March 15, 2020 that all schools in the state of Iowa close due to COVID-19. Since that time, Galva-Holstein Schools and Schaller-Crestland Schools have worked to provide educational opportunities for all students as well as support and services for families. We have worked together as families and local organizations to support our community during these unprecedented times.

We have:

- Distributed over 150 devices to families to access continuous learning online.
- Provided more than 68,430 free meals to young people in our communities.

Dear Families,

While I can't predict the future, I can tell you what your school has planned for the 2020-2021 school year. We've had all administrators and several staff members developing plans so you can return to school safely. Each building will have new safety measures even if they aren't EXACTLY the same. This document contains an overview of what to expect as we return to school.

We've worked on 3 different plans.

One plan is an In person learning model with additional health and safety protocols; an online model, which would be 100% of instruction online; and then a hybrid model, which would be a combination of in-person and online education. At this time, we believe the best option for us to meet the students' academic and social-emotional needs, is to implement our in-person learning plans.

Please know that the health and safety of our students and staff is our number one priority. We are implementing several safety and mitigation strategies such as sanitizing busses daily, routinely cleaning high traffic areas throughout the day, reinforcing and teaching the importance of hand washing, requiring bus riders to wear face masks, and we will social distance in classrooms as best as possible. Each building will have a separate location for students who are ill while maintaining a location for those students who have general health concerns, such as needing a Band-Aid or an ice pack. We will monitor and utilize the most up to date guidance from the CDC, Iowa Department of Public Health and the Ida County and Sac County health departments. Recommendations for health and safety protocols are constantly updated. As guidance changes, our protocols will also be updated.

We've designated August 19th-21st as Return To Learn Days. These will be half days and be a great way to help us all to get back into a routine. August 19 will be a day just for Kindergarten-5th graders, as well as 6th graders and 9th graders. This will provide a good transition for the elementary students and give us a time of orientation for the 6th and 9th graders since they will be new to their buildings. August 20 & 21, all Kindergarten-12th grade students will be in school. The days will start at normal times and dismiss after lunch. Our full days of classes will begin on Monday, August 24th.

Sincerely,
Jon Wiebers
Superintendent



RETURN TO LEARN DAYS SCHEDULES

August 19-21, 2020 - 1/2 days

Galva-Holstein Elementary (8:20 a.m. - 12:30 p.m.)

Wednesday, August 19 - Friday, August 21

All Kindergarten - 5th grade students attend

Schaller-Crestland Elementary (8:15 a.m. - 12:30 p.m.)

Wednesday, August 19 - Friday, August 21

All Kindergarten - 5th grade students attend

Ridge View Middle School (8:12 a.m. - 12:12 p.m.)

Wednesday, August 19

Only 6th grade students and New Students to the District attend

Thursday, August 20

All 6th - 8th grade students attend

Friday, August 21

All 6th - 8th grade students attend

Ridge View High School (8:20 a.m. - 12:25 p.m.)

Wednesday, August 19

Only 9th grade students and New Students to the District attend

Thursday, August 20

All 9th - 12th grade students attend

Friday, August 21

All 9th - 12th grade students attend

SCHOOL HOURS (Full Days) Beginning Monday, August 24, 2020

Monday, August 24

FIRST FULL DAY OF CLASSES

All PreK - 12th grade students attend

School Hours starting August 24 (Mondays, Tuesdays, Thursdays, Fridays)

Schaller-Crestland Elementary - 8:15 a.m. - 3:30 p.m.

Galva-Holstein Lower Elementary - 8:20 a.m. - 3:30 p.m.

Galva-Holstein Upper Elementary - 8:20 a.m. - 3:15 p.m.

Ridge View Middle School - 8:12 a.m. - 3:12 p.m.

Ridge View High School - 8:20 a.m. - 3:25 p.m.

School Hours starting August 26 (Wednesdays)

Schaller-Crestland Elementary - 9:15 a.m. - 3:30 p.m.

Galva-Holstein Lower Elementary - 9:20 a.m. - 3:30 p.m.

Galva-Holstein Upper Elementary - 9:20 a.m. - 3:15 p.m.

Ridge View Middle School - 9:12 a.m. - 3:12 p.m.

Ridge View High School - 9:20 a.m. - 3:25 p.m.

HOW DECISIONS ARE MADE

We will take guidance from the National, State and Local health organizations that monitor the status and spread of COVID-19. The constantly changing environment and level of community spread will dictate the learning scenario in our school districts.

The health and safety of all students and staff is a priority. Many new practices are being put in place to protect staff and students so as to minimize their risk of exposure to COVID-19.

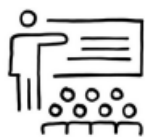
SOCIAL EMOTIONAL LEARNING

Our communities have experienced trauma that has impacted everyone in different ways. We know that we are better together. We are committed to creating a school community where everyone feels safe, cared for and ready to learn.

We believe

- Students will learn and behave at optimal levels when they feel connected, cared for and valued.
- Positive adult relationships are the critical starting point for all learning.
- Routines and structure along with clear expectations help students feel safe and ready to learn.
- All students and adults need and benefit from social emotional learning.
- Parents and caregivers are essential partners in education. We should work together to support our students.

OVERVIEW OF THREE LEARNING SCENARIOS



IN PERSON LEARNING

Face to face learning at the school building.



ONLINE LEARNING

Virtual learning that happens online from home.



HYBRID LEARNING

Short term transition of learning which is a combination of in person and online.



IN PERSON LEARNING

At this time, the District believes that the most effective way to support the academic and social- emotional needs of our students and families is to provide learning in person, at school with proper mitigation strategies in place. This is where we believe our students gain the most comprehensive benefit as they have more contact and access to, as well as assistance from, their teachers and support staff. As such, in-person learning will continue to be our baseline that we strive to return to when moves to alternate learning scenarios (hybrid or online) are required.

Attendance, instruction, and grading for in-person learning will all be done the same as it has been in the past, with the addition of many health and safety measures to provide the safest possible learning environment for students and staff.

HEALTH & SAFETY PROCEDURES

PREVENTION

- We recommend that students bring a filled water bottle of their own each day.
- Parents or guests of the building will be restricted from visiting during the school day. This is a precautionary measure. Visitors will not be allowed to eat with their child or grandchild during the school day.
- Students and staff who are ill or exhibiting any symptoms of COVID-19 should not come to school or work. Children with fevers of 100.4, vomiting, or diarrhea will need to stay home for 24 hours after the fever, vomiting, or diarrhea have stopped. If using a medication such as acetaminophen to lower a fever this will not count towards the 24 hours fever free.
- Staff and students who have been exposed to a person with a confirmed diagnosis of COVID-19 should follow current CDC recommendations to stay home and monitor their health.
- Per CDC guidance, exposure is considered to be within six feet of the diagnosed individual for a total of 15 minutes or greater.
- Daily screening of all students when entering school buildings is not feasible and is not recommended by the Ida and/or Sac County Health Departments. Instead, everyone is asked to pre-screen for symptoms at home before coming to school each day.
- Face coverings are being highly recommended to be worn by all staff, visitors and students. Face covering may be required in circumstances where social distancing is not possible
- Face coverings are most essential in times when physical distancing is difficult.
- Staff will make every effort to maintain a physical distance of 6 feet between students throughout the school day. When 6 feet cannot be provided, as much distance as feasible should be kept between students and use of face coverings reinforced.
- Staff will teach and reinforce washing hands with soap and water for at least 20 seconds. When soap and water are not readily available, students and staff will have ready access to hand sanitizer.

In alignment with guidelines from the CDC and Ida and Sac County Health Departments:

- Hand washing breaks should be scheduled 3-6 times throughout the day for all students.
- Signage will be posted throughout schools that promote everyday protective measures and describe how to stop the spread of germs (such as by properly washing hands and properly wearing a face covering).
- School health office protocols will create a separate space for the care of students who are ill, while having another space to serve the general health and medication needs of students.
- If your child is showing signs of illness you or an emergency contact will be asked to pick them up from school as quickly as possible
- District staff will participate in the state COVID-19 safety training module, which includes information on the use of PPE, prevention measures and safety measures, and maintaining a healthy and safe classroom environment.

HEALTH & SAFETY PROCEDURES CONTINUED

CAFETERIA & MEALS

- We will physical distance as much as possible in the lunchroom. We will have additional rooms or areas for eating.
- Secondary students will go to lunch on a staggered schedule to minimize the number of students in the cafeteria each period.
- Buildings may add a lunch period to reduce the number of students in each lunch period as well.
- All cafeteria staff will be wearing face coverings and gloves while serving students.
- No buffet-style salad bar will be available for elementary students during the 2020-2021 school year; instead, prepackaged fruits and vegetables will be available.
- Pre-packaged salads will be available at secondary buildings
- Eating spaces will be disinfected multiple times throughout the lunch period.
- When possible, food items will be prepackaged and boxed to minimize face-to-face contact in the cafeteria line.
- If the school or schools moved to a Hybrid model of learning, meals will still be provided to those students who are not in attendance that day.

CLEANING

- Custodians will conduct routine cleaning at least daily, and as frequently as feasible throughout the school day especially for high traffic areas.
- Custodians will sanitize all learning spaces each night or early morning utilizing district purchased Disinfecting Misters.
- School staff will routinely clean shared surfaces and equipment that are commonly used.
- High-touch areas in the building, other than the cleaning already done in the classrooms, will be cleaned regularly
- School staff will work to maintain adequate inventory of building cleaning supplies and personal protective equipment.

BUSES & TRANSPORTATION

- Students will be required to wear face coverings on the bus.
- When feasible, students will be seated with members of the same household.
- Students are expected to wash hands or use hand sanitizer before boarding the bus whenever possible.
- Seats, handles and high-touch areas will be disinfected daily.
- Windows will be opened to allow outside air to circulate whenever possible.
- We will possibly add a third before and after school shuttle bus running between Holstein and Early and Schaller and Early.
- Buses will be disinfected twice a day with disinfecting misters.

**health and
safety**





ONLINE LEARNING

Online Learning will take place when/if a decision is made for an emergency closure of a building and/or buildings. If a single building closes due to a COVID-19 outbreak and there is a need for sanitization, the students and staff in that building will immediately transfer to virtual learning. If there is a need to close the entire district, students and staff of the district will immediately transition to virtual classrooms. Attendance will be taken. Grades will be earned and credit will be awarded based on those grades. The Districts will utilize online learning methods outlined below.

ELEMENTARY ONLINE LEARNING

COMMUNICATION

The goal is to maintain a daily connection with students if we need to move into the continuous online learning model.

- Teachers will use a communication tool, such as email, class dojo, Facebook or something similar to communicate and share announcements to families.
- Teachers will utilize Zoom and/or Google Meet to meet face to face with students.
- Teachers will have designated office hours on Zoom or Google Meet in order to assist students with questions and/or to reteach curriculum individually or in small groups as needed.

LEARNING PLATFORMS

- Seesaw will be used to receive assignments. Students will be able to interact with material provided by writing, drawing or uploading their work.
- Google Classroom will be used to receive assignments. Students will be able to download, create, interact and upload assessments.

ATTENDANCE

- If a student will be absent for a day, please message the teacher so he/she will know your student will not be attending that day.
- Attendance will be taken daily based on the student's completion of the task/assignments and complete work.

GRADING

- Current District grading practices will be used to assess student learning.
- This ensures continuity in the event we need to move between modes of instruction throughout the year.
- Student progress is collected in a variety of ways such as work samples, common assessments and observations.

TECH TOOLS FOR LEARNING

- Grades PreK-3: Seesaw, Zoom, Google Meet
- Grades 5-6: Google Classroom, Zoom, Google Meet

SECONDARY ONLINE LEARNING

VIRTUAL CLASSROOM

Teachers will create and maintain a virtual classroom with specific and regular meeting times.

- Teachers will use live streaming, screen casting and video conferencing to connect with students and broadcast lessons.
- Teachers will utilize Zoom and/or Google Meet during designated office hours to assist students with questions and/or deliver academic interventions individually or in small groups.

LEARNING PLATFORMS

- Teachers will assign and administer classwork, homework, quizzes, tests and projects on Google Classroom.
- Teachers will grade assessments, provide consistent feedback and progress monitor student learning on Google Classroom.
- Students will monitor Google Classroom for teacher announcements and updates.
- Students will utilize Google Classroom to access learning materials, complete assignments, submit work and receive feedback.



EXPECTATIONS

Students will actively engage in online learning within virtual classrooms during designated meeting times.

- Students are expected to join all virtual lessons on time, to remain in virtual classroom for the duration of the lesson and to meet teachers' online classroom expectations during a virtual lesson.
- Students can expect 90 minutes per class per week.
 - This includes time to view the lesson and complete any assigned tasks, whether they are synchronous or asynchronous.
- Students can expect to be engaged in learning for 3-4 hours a day.
- Small and large group re-teaching (intervention) will be available 70 minutes each day.
- Teachers and students will practice patience and flexibility while navigating learning online.

TEACHER SUPPORT & COMMUNICATION

- Teachers will respond to emails within 24-48 hours.
- Teachers will provide consistent feedback to all students.

TECH TOOLS FOR LEARNING

- Grades 7-12: Google Classroom, Zoom and Google Meet
- May include additional electronic platforms as deemed necessary.

MIDDLE SCHOOL - FULL CLOSURE SCHEDULE

Time	Event	Monday	Tuesday	Wednesday	Thursday	Friday
7:30 a.m	7:30 a.m Wake up	Eat breakfast, get dressed, collect learning materials, set-up work station				
8:20-8:50	Online Class Meeting	Period 1	Period 5	Period 1	Period 5	Student Work Time Teacher Prep Time Scheduled Office Hours
8:55-9:25	Online Class Meeting	Period 2	Period 6	Period 2	Period 6	
9:35-10:05	Online Class Meeting	Period 3	Period 7	Period 3	Period 7	
10:15-10:45	Online Class Meeting	Period 4	Period 8	Period 4	Period 8	
10:50-12:00	Intervention	Math Priority	Period 9	Reading Priority	Period 9	
12:15-1:15	Lunch	Students are encouraged to eat lunch. School is providing free bagged lunch.				
1:20-2:20	Student Work Time	Students work on assignments. Scheduled office hours.				
2:25-3:25	Student Work Time	Student work time. Teacher Prep Time.				

Grading Procedure: Student work will be graded during distance and hybrid learning. Students are expected to complete and submit assigned work on time. Teachers will provide consistent feedback and practice flexibility as students transition to distance and/or hybrid learning.

HIGH SCHOOL - FULL CLOSURE SCHEDULE

Time	Event	Monday	Tuesday	Wednesday	Thursday	Friday
7:30 a.m	7:30 a.m Wake up	Eat breakfast, get dressed, collect learning materials, set-up work station				
8:20-8:50	Online Class Meeting	Period 1	Period 5	Period 1	Period 5	Student work time/Teache-r prep time/Scheduled office hours
8:55-9:25	Online Class Meeting	Period 2	Period 6	Period 2	Period 6	
9:35-10:05	Online Class Meeting	Period 3	Period 7	Period 3	Period 7	
10:15-10:45	Online Class Meeting	Period 4	Period 8	Period 4	Period 8	
10:50-12:00	Intervention	Math Priority	ELA Priority	Science Priority	Other Priority	
12:15-1:15	Lunch	Students are encouraged to eat lunch.				
1:20-2:20	Student work Time	Students work on assignments/Scheduled office hours				
2:25-3:25	Student Work Time	Student work time/Teacher Prep Time				

Grading Procedure: Student work will be graded during distance and hybrid learning. Students are expected to complete and submit assigned work on time. Teachers will provide consistent feedback and practice flexibility as students transition to distance and/or hybrid learning.



HYBRID LEARNING

The third learning scenario that the districts may use this year is a combination of the two other scenarios. This scenario will be used when classrooms/classes are transitioning back to in-person learning from a required online continuous learning scenario. The hybrid learning scenario lasts for 2 weeks and has half of the students splitting their time between in-person learning for 2 days a week and online continuous learning for 3 days of the week. This allows buildings to have half the number of students in person during the 2-week transition.

In the hybrid learning scenario, each family in the district would be assigned either an A day or B day indicator which is when all of the students in that family unit would attend school in person. On the opposite days, students would participate in continuous online learning. Below is an example of what that 2 week period would look like along with the attendance and grading procedure.

ELEMENTARY HYBRID LEARNING

In the event that we have to implement the hybrid model, we will do our best to keep all of the elementary students in session. We feel it is essential for our elementary population to have continued learning via face to face, so we will work to decrease class sizes using additional teachers and support staff.

MIDDLE SCHOOL HYBRID LEARNING SCHEDULE

Period	Time	A-Monday	B-Tuesday	A-Wednesday	B-Thursday	Friday: Flex Day
	7:30 - 8:15	Breakfast	Breakfast	Breakfast	Breakfast	Breakfast
1st Period	8:20-8:50	A-J (Students with last names beginning with A-J)	K-Z (Students with last names beginning with K-Z)	A-J (Students with last names beginning with A-J)	K-Z (Students with last names beginning with K-Z)	8:20-10:30 Mandatory Interventions provided for students with a grade below 70%. LUNCH: Grab & Go Students may also schedule additional help with teachers. 10:30-4:00 Teachers have the opportunity to record and prepare lessons for the following school week.
2nd Period	8:53-9:23					
3rd Period	9:26-9:56					
4th Period	9:59-10:29					
6th Period	10:32-11:02					
5th Period	LUNCH 11:05-12:13					
7th Period	12:16-12:47					
8th Period	12:50-1:21					
9th Period	1:24-1:55					
Office Hours	1:55-3:45					
Staff hours 7:45am-3:45pm						

HIGH SCHOOL HYBRID LEARNING SCHEDULE

Period	Time	A Monday	B Tuesday	A Wednesday	B Thursday	Friday Flex	
1st Period	8:20-8:53	A-J	K-Z	A-J	K-Z	<p style="text-align: center;">8:20-10:30 Mandatory interventions provided for students with a grade below 70%</p> <hr/> <p style="text-align: center;">Students may also schedule additional help with teachers</p>	
2nd Period	8:56-9:31						
3rd Period	9:34-10:09						
Raptor Time	10:12-10:42						
4th Period	10:45-11:20						
5th Period (Lunch)	11:23-12:29						
A Lunch	(Eat: 11:23-11:53) (Class: 11:56-12:29)						
B Lunch	(Class: 11:23-11:56) (Eat: 11:59-12:29)						
6th Period	12:31-1:04						
7th Period	1:07-1:40						
8th Period	1:43-2:13						
Office Hours	Teachers have the opportunity to assist students and prepare lessons for the following days.						

Any questions regarding the District Plans should be directed to:

Ridge View High School Principal - Josh Sussman
 Email: jsussman@rvraptors.org
 Phone: 712-368-4353 ext.301

Ridge View Middle School Principal - Barry Andersen
 Email: bandersen@rvraptors.org
 Phone: 712-273-5184 ext. 201

Galva-Holstein Elementary School Principal - Mike Richard
 Email: mrichard@rvraptors.org
 Phone: 712-368-4353 ext.306

Schaller-Crestland Elementary School Principal - Adam Brand
 Email: abrand@rvraptors.org
 Phone: 712-275-4267

District Offices Superintendent - Jon Wiebers
 Email: jwiebers@rvraptors.org
 Schaller Office: 712-275-4267
 Holstein Office: 712-368-4353 ext. 305